



# White Hawk



Stock #: 61259-0  
 Serial #: 1UJBK0BS7P14A0123  
 Model: 29BH WHITE HAWK TT

Model Year: 2023 Dealer Name: GAG'S CAMPER WAY, INC  
 55151 210 LANE  
 MANKATO, MN 56001  
 USA

## Standard Equipment

## Optional Equipment

THE FOLLOWING ITEMS ARE STANDARD ON THIS MODEL AT NO EXTRA CHARGE

OPTIONAL EQUIPMENT INSTALLED ON THIS VEHICLE BY MANUFACTURER

- EXTERIOR**
- Aerodynamic, rounded front profile with front diamond plate
  - Stronghold VBL™ vacuum-bonded, laminated side and rear walls (including slideout room walls)
  - Azdel laminated interior and exterior walls
  - Magnum Truss™ Roof System with one piece seamless roof material with 20 year warranty
  - 5/8 in. tongue-and-groove plywood decked flooring
  - American-made I-Beam frame with integrated A-frame
  - G20 dark tinted, frameless safety-glass windows
  - 30 in. friction-hinged main entry doors (select models)
  - Swing out grab handle
  - Exterior TV bracket with 120V and cable outlets
  - Outdoor camp kitchen with embossed metal countertops (select models)
  - Siam latches on front pass-through storage doors (select models)
  - Marine-grade exterior speakers with blue LED accent lighting (2)
  - Galvanized steel and impact-resistant wheel wells
  - 30-amp service
  - Rock Solid Stabilizer System
  - Mounted camera bracket for pre-wired side and rear backup prep
  - Keyed-Alike™ lock system
  - Detachable power cord
  - A-frame mounted solar prep
  - Battery quick disconnect
  - Black tank flush
  - ABS propane bottle cover
  - Automotive-style aluminum rims
  - Spare tire with cover
  - Inverter pre-wire
  - JayPort system with outside griddle (griddle optional on 26FK, 29RL & 32RL)
  - LCI Solid Step® fold down aluminum tread steps on main entry door

- INTERIOR**
- Arched interior ceiling up to 81" interior height
  - LED lighting throughout
  - Electric fireplace
  - Directional and closeable central A/C vents
  - Plywood dinette, bunk and bed bases (applicable models)
  - Residential vinyl flooring with cold crack resistance
  - High output auto-ignition 35,000 BTU furnace with wall thermostat
  - Front windshield with roller shade with radiant barrier backer
  - Solid hardwood cabinets with screwed and glued cabinet stiles
  - Deep, split bowl, stainless steel sink with high-rise, pull-out faucet and dry rack/sink cover combo
  - Decorative backsplash
  - Ball-bearing drawer guides with 75 lb. capacity
  - Wood panel fridge inserts
  - 60 in. x 80 in. queen bed (60 in. x 75 in. in Murphy bed models)
  - Murphy bed design allowing pass-through exterior storage access (24MRB & 25MBH)
  - Fixed bunks with 120V outlet, 12V USB and cargo net (bunk models only)
  - Jayco exclusive Teddy Bear "soft-touch" bunk mats (bunk models only)
  - Powered roof vents in bathroom and main bedroom
  - Decorative roller shades with reflective backer

- CUSTOMER VALUE PACKAGE (MANDATORY)**
- American-made nitro-filled Goodyear® radial tires with self-adjusting brakes (made in the USA)
  - Tankless water heater
  - 55 gal. fresh water tank
  - 30 lb. propane bottles (2)
  - Outside shower
  - Power awning with LED light
  - Power tongue jack
  - Slide topper prep (excludes slide rooms with a fridge)
  - 39" or 50" LED Smart TV
  - 15,000 BTU A/C
  - AM/FM/Bluetooth® stereo with speakers
  - 8 cu. ft. gas/electric refrigerator
  - Oven with 3-burner recessed cooktop
  - Microwave
  - Porcelain foot flush toilet
  - Showers with solid enclosures
  - Bathroom skylight

- LUXURY PACKAGE (MANDATORY)**
- Climate Shield™ zero-degree tested weather protection:
  - Fully enclosed and heated underbelly (ducted)
  - 35,000 BTU output furnace
  - Double layer fiberglass batt insulation in ceiling and floor
  - Double sided radiant barrier insulation (roof, floor, cap, and slide room floors)
  - PEX plumbing
  - Front molded fiberglass cap with automotive-style windshield and blue LED accent lighting
  - Frameless windows
  - Fold-down aluminum tread entry steps (main entry), aluminum tread entry steps (second entry, select models)
  - Roof-mount solar prep
  - Kitchen skylight with shade
  - MAXXAIR power roof vent (main living area)
  - JAYCOMMAND® "Smart RV" system with TPMS (Tire Pressure Monitoring System)

Base price	55,817.00
Modern Farmhouse	n/c
USA Standards	n/c
Customer Value Package	5,250.00
Luxury Package	3,000.00
Overlander Solar Package	743.00
No 2nd AC	n/c
30 AMP Service	n/c
Fireplace	443.00
10 Cu. Ft. 12v Refrigerator	293.00
Electric Stabilizer Jacks	638.00
Roof Ladder (Std)	n/c
Sofa	n/c
Dinette	n/c
Queen Bed	n/c

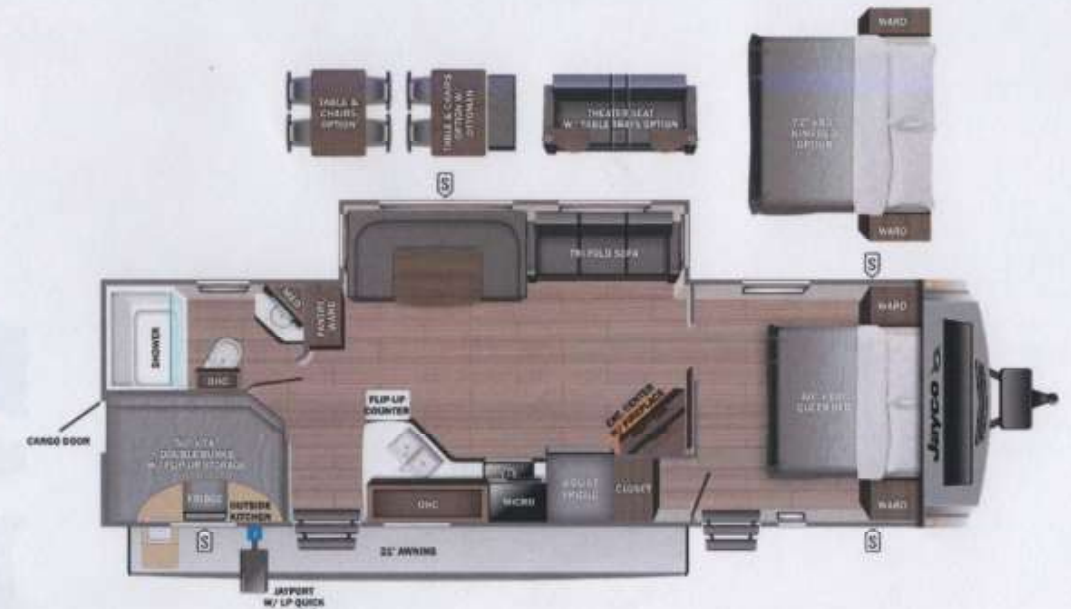
UNIT TOTAL **66,184.00**

### DEALER INSTALLED OPTIONS

FREIGHT:	2,495.00
PREP:	500.00
TOTAL:	<b>69,179.00</b>

## Manufacturer's Suggested Retail Price \$66,184.00

TOTAL AMOUNT DOES NOT INCLUDE STATE AND LOCAL TAXES OR LICENSE FEES. THE PRICE SHOWN ABOVE MAY OR MAY NOT BE REPRESENTATIVE OF THE ACTUAL SELLING PRICE OF SIMILAR RECREATIONAL VEHICLES IN YOUR AREA.



**UVW**  
7426 lbs

**Sleeps**  
3

**Length**  
34' 8.63"

### DIMENSIONS

Exterior height:	134.25"
Exterior width:	96.00"
<b>WEIGHTS</b>	
GVWR:	8500
GAWR (front):	4400
GAWR (rear):	4400
Approx. Gross Cargo Carrying Capacity (GCCC):	1074

### CAPACITIES

Fresh water tank (gals.):	55.00
Gray water tank (gals.):	61.00
Black water/toilet tank (gals.):	30.50
Propane (lbs.):	60
Propane (gals.):	14
Water heater (gals.):	0.00

### TIRES

Tire size (front):	ST225/75R15E
Tire size (mid):	
Tire size (rear):	ST225/75R15E
Tire size (spare):	ST225/75R15E

### SEATING & SLEEPING

\*\*\*Some dimensions may be rounded and may vary from the actual dimensions\*\*\*  
 \*\*\*Weights may be estimated calculations and may vary from the actual weight - refer to the vehicle weight labels for actual weights\*\*\*  
 Floorplans, features and specifications are subject to change without notice.

